

# Signagelink Online Edition

## Installation and Configuration Guide



P.O. Box 690896  
Orlando FL 32869  
Phone: (407) 718-1828  
[www.signagelink.com](http://www.signagelink.com)

This document, ©2010, SignageLink.Com., is designed for the sole use of our clients and no portion of it may be copied, published, or otherwise distributed to parties outside the agreement outlined herein without the express written permission of SignageLink.Com.

## Manual History

<b>Manual Revision</b>	<b>Signagelink Version</b>	<b>Publication Date</b>
C	1.0	June 2009
D	3.0	July 2010
E	3.5	January 2012

# Contents

Manual History .....	2
1. Platform Supported for Signagelink Online Edition.....	4
2. System Requirements.....	4
2.1 Software Requirements.....	4
2.2 Hardware Requirements.....	4
3. Software Installation .....	5
3.1 Server Installation.....	5
4. Configurations.....	9
4.1 Server Configuration.....	9

# 1. Platform Supported for Signagelink Online Edition

## 2. System Requirements

### 2.1 Software Requirements

Table 1-1 lists the minimum Signagelink software requirements for Microsoft Windows XP/2003 platforms.

**Table 1-1. Microsoft Windows Platform – Minimum Requirements**

Component	Version
Server Operating System	Windows 2003, Windows 2008, Windows 7,
Player Operating System	Windows XP SP 2, Windows 2003, Windows 7
Microsoft .NET Framework	• 2.0
Adobe Flash Player	10.0

### 2.2 Hardware Requirements

Table 1-2 lists the minimum hardware requirements for the Signagelink server host and client player.

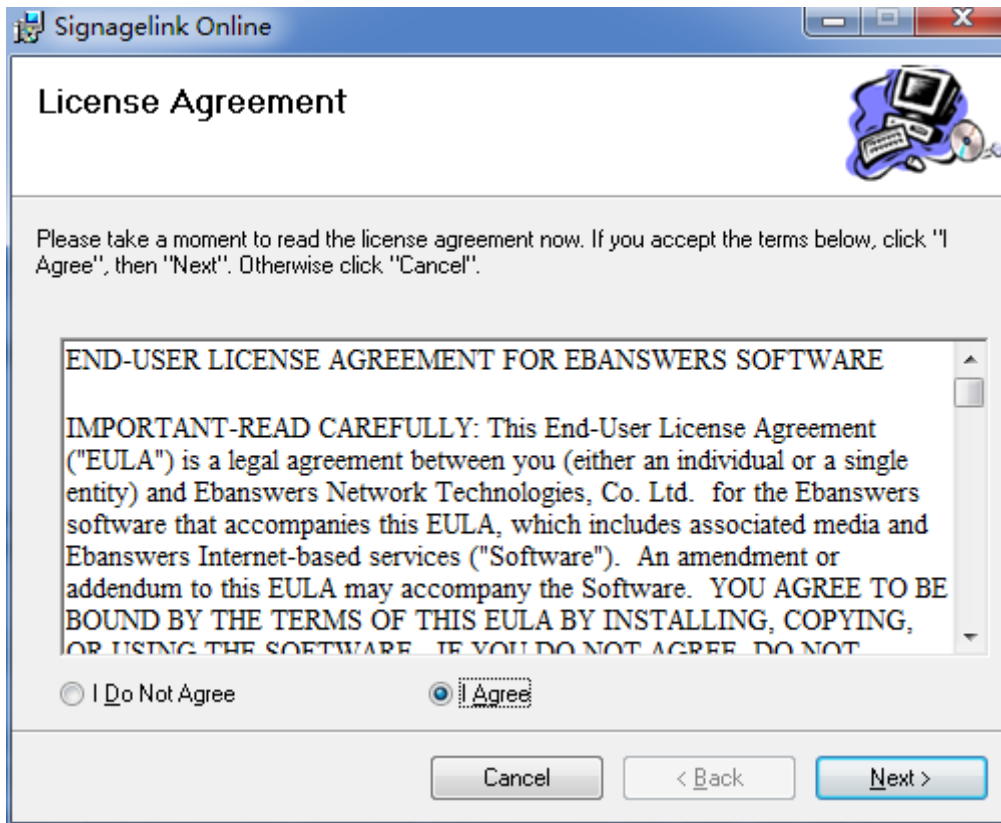
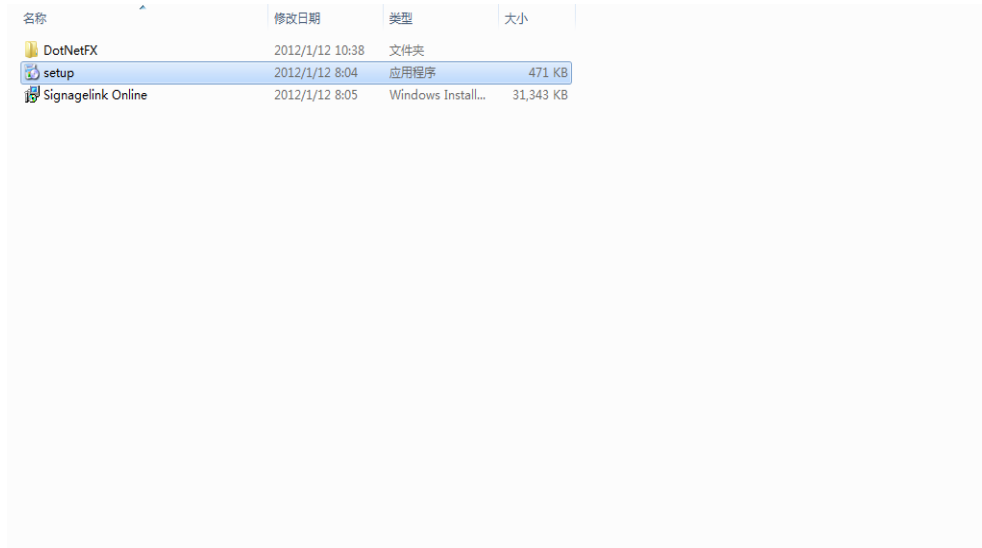
**Table 1-2. Minimum Signagelink Hardware Requirements**

Component	Minimum Requirement	Suggest Requirement
Player Memory	1GB	2GB
Server Memory	2 GB	4GB
Server Disk Space	80 GB (Depend on data you load to the server)	160GB

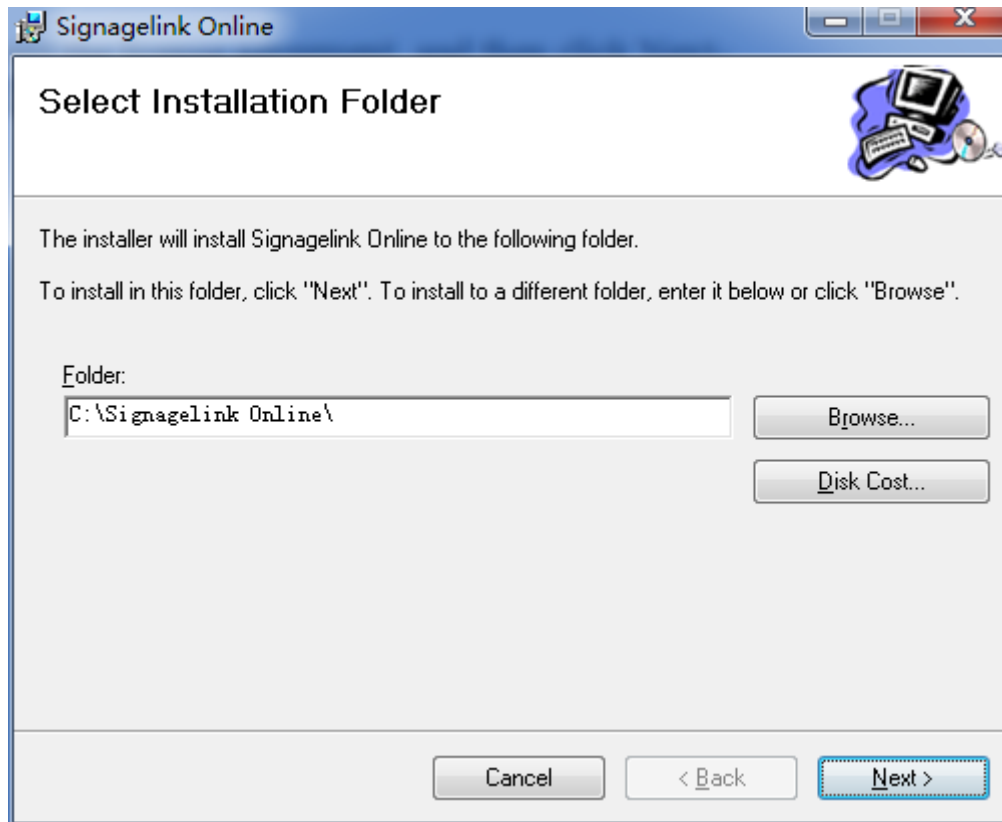
### 3. Software Installation

#### 3.1 Server Installation

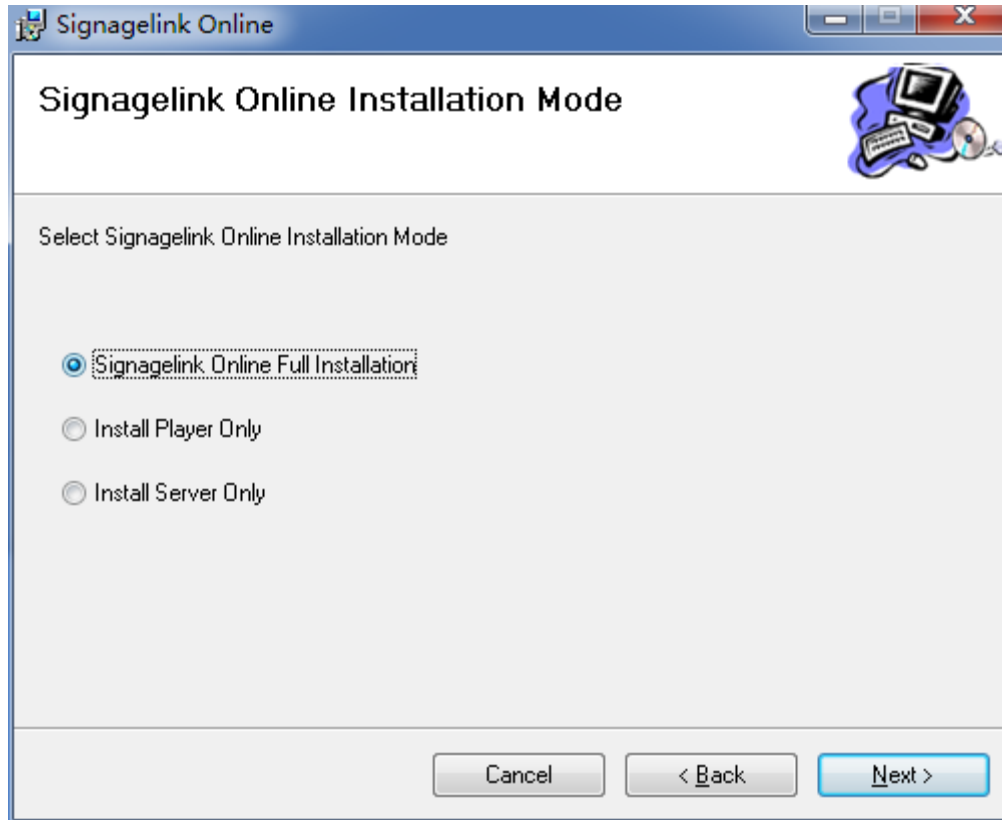
- Navigate to software directory, then double click on setup.exe



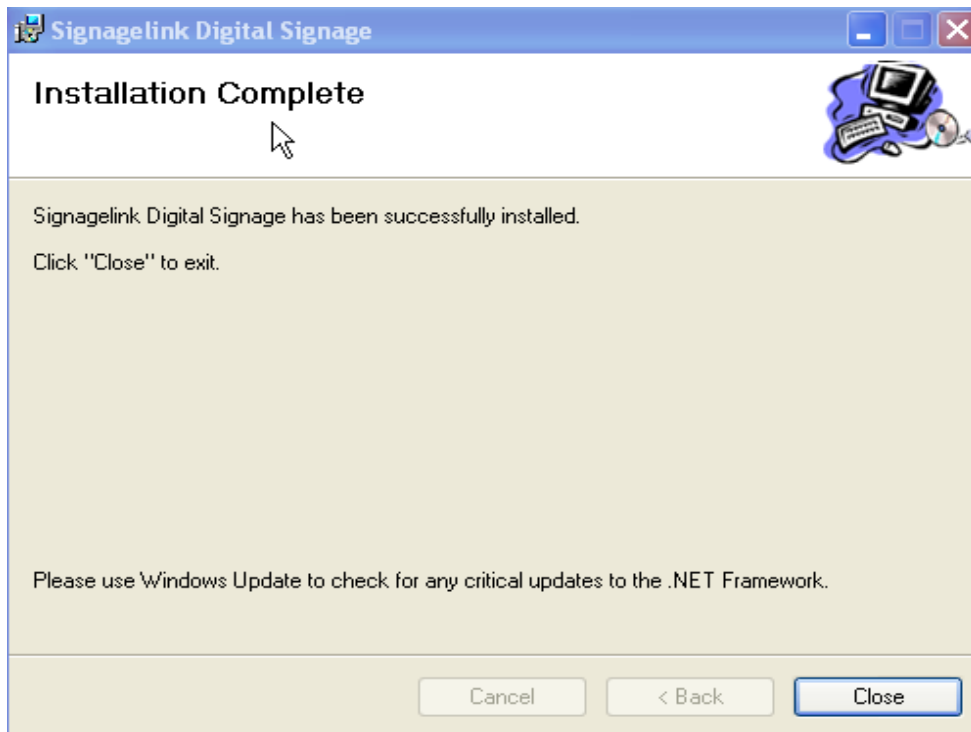
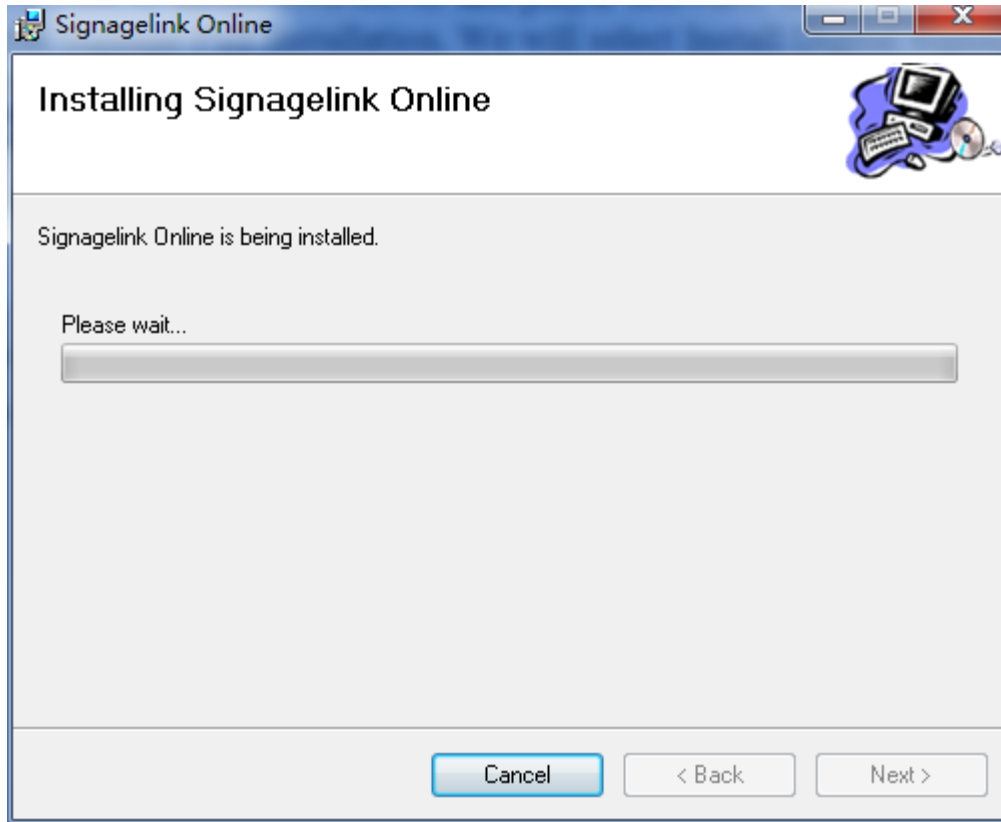
Accept the license agreement, and then click Next.



Please select an installation directory. The default location is c:\DigitalSignage. Change it If you want to install the software in other location, Then click Next.



If you want to install both server and player software, then you have to select Digital Signage Full Installation. Then click Next





After the server and the player have been installed successfully, they will be open automatically. There is no need to manually connect the server and the player. Pls set the server and the player in the same network section.

You can make a new content in the next step.....

## **4.Configurations**

### **4.1 Server Configuration**

- Users may import Microsoft Word, Excel and PowerPoint files into digital signage content; install Microsoft Office 2003, on server before the operations.